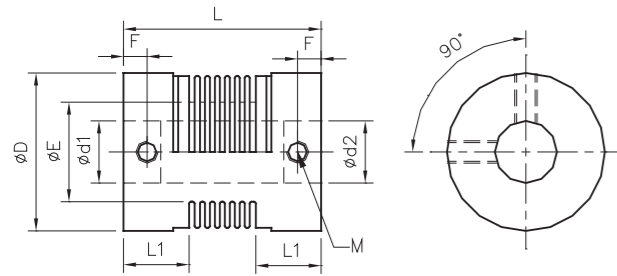
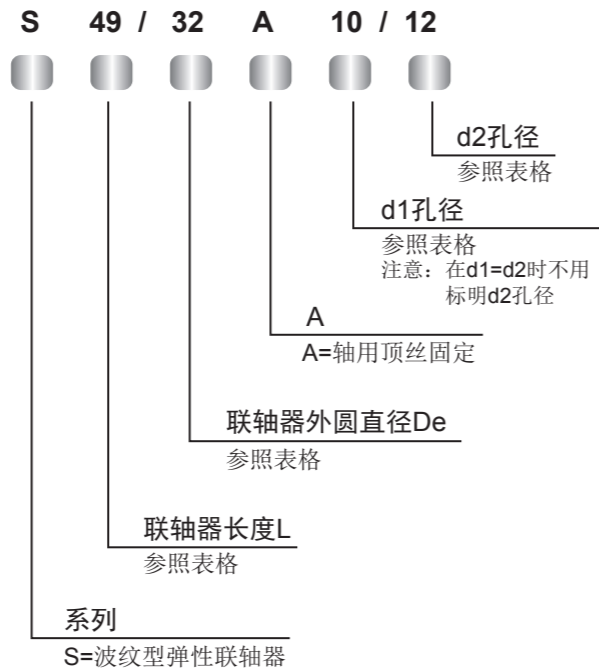


联轴器

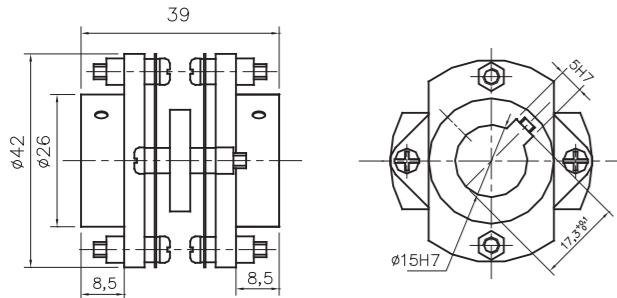
联轴器的尺寸:



订货代码:

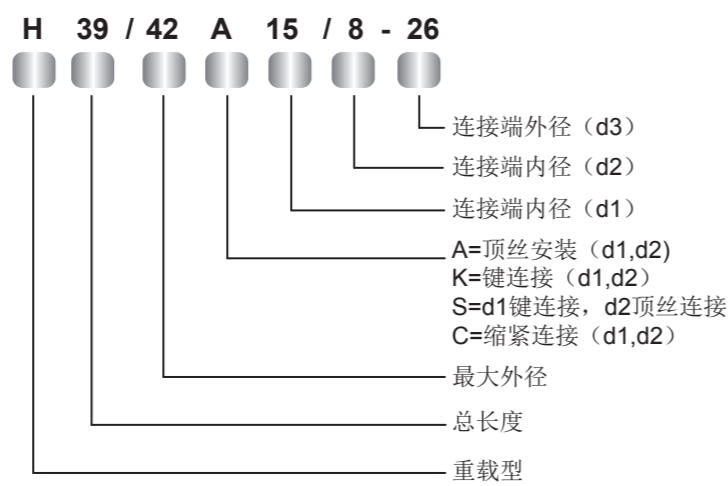


重型弹性片式联轴器:

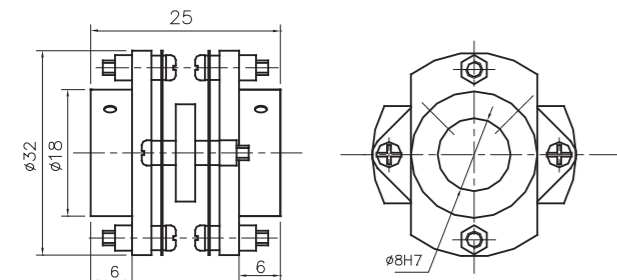


最大轴为18mm, 最小为8mm。  
键连接最小轴径为11mm。

订货代码:

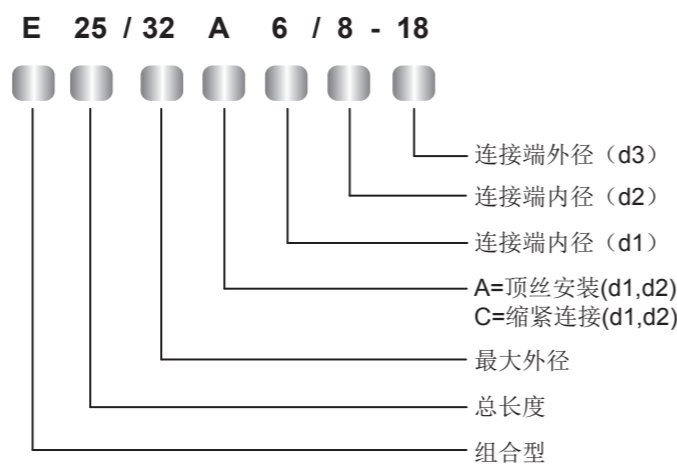


组合型弹性片式联轴器:



最大轴为10mm, 最小为6mm。

订货代码:



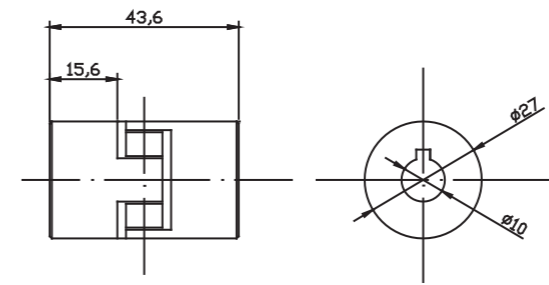
联轴器

绝缘联轴器:

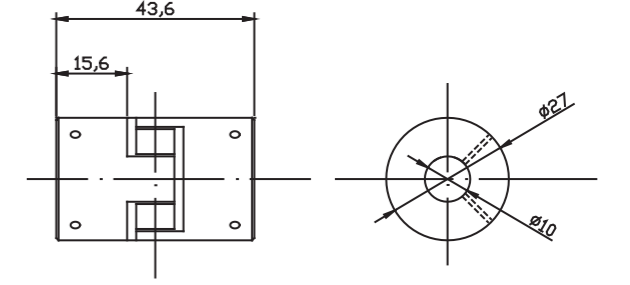
规格	Φd1/Φd2轴径	ΦD	L	L1	扭矩	偏心角度	最高转速	顶丝 (M)	材料
AL050K□□/□□	7---10mm用3mm的键	27	43.6	15.6	15N.m	1°	12000r/min		铝合金, 橡胶
键连接	11---14mm用4mm的键	27	43.6	15.6	15N.m	1°	12000r/min		铝合金, 橡胶
	15---18mm用5mm的键	30	43.6	15.6	15N.m	1°	12000r/min		铝合金, 橡胶
	19---24mm用6mm的键	30	43.6	15.6	15N.m	1°	12000r/min		铝合金, 橡胶
AL050A□□/□□									
顶丝连接	7---17mm	27	43.6	15.6	15N.m	1°	12000r/min	M4	铝合金, 橡胶
	18---24mm	55	43.6	15.6	15N.m	1°	12000r/min	M4	铝合金, 橡胶

联轴器AL050:

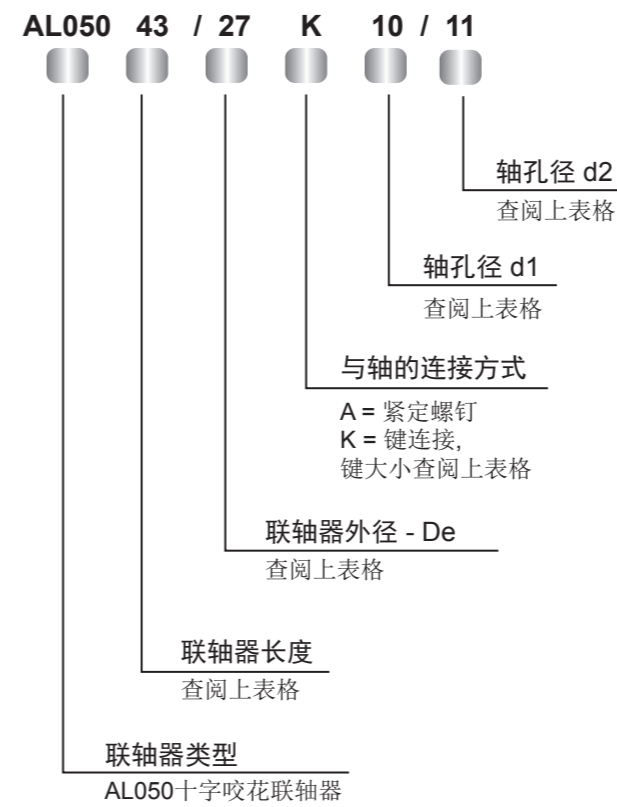
键槽连接



顶丝连接



订货代码:



选型举例:  
键槽连接: AL05043/27K10/11  
顶丝连接: AL05043/27A10/10